

**DIAMOND VALVES TRADING CO**  
**شركة الصمامات الماسية التجارية**



# **COMPANY PROFILE**

FOR PLUMBING, FIRE FIGHTING, HVAC & GAS NETWORKS

# TABLE OF CONTENT

Introduction	02
Mission & Vision	03
Quality Policy	04
Servies/Brands	05
Projects	06
Clients	08
Products	10
Contact Us	27



# INTRODUCTION

Welcome to Diamond Valves Trading Company, your premier importer and supplier of high-quality MEP solutions. Specializing in an extensive range of products including pipes, fittings, valves, hangers, supports, and various accessories, we cater to the diverse needs of projects and industries across plumbing, fire fighting, HVAC, and gas networks.

At Diamond Valves Trading Company, we understand the critical role that reliable components play in the success of your projects. That's why we prioritize quality, durability, and performance in every product we offer considering the commercial aspect as well. Our strategic location in Riyadh, allows us to serve a wide range of clients, from contractors to project managers and industrial companies, ensuring timely delivery and unparalleled customer service.

Choose Diamond Valves Trading Company as your trusted partner in the industry, & experience the difference of working with a company that values integrity, quality, & customer satisfaction above all.

With a commitment to excellence, we partner with renowned manufacturers to ensure that our clients receive only the best materials that meet international standards. Our expert team is dedicated to providing tailored solutions, ensuring that we meet the specific requirements of each project efficiently and effectively.



# MISSION

At Diamond Valves Trading Company, our mission is to provide the highest quality MEP & GAS solutions by importing and supplying premium pipes, fittings, valves, hangers & supports, and other accessories. We are committed to delivering exceptional service and innovative products that meet the diverse needs of our clients in plumbing, fire fighting, HVAC, and gas networks.

Our goal is to foster long-term partnerships built on trust, reliability, and a shared commitment to excellence, ensuring the success of every project we undertake. Through continuous improvement and a focus on sustainability, we aim to be a leading force in the industry, contributing to the growth and development of the communities we serve.

# VISION

Our vision at Diamond Valves Trading Company is to be the leading provider of innovative MEP & GAS solutions in the SAUDI ARABIA, recognized for our unwavering commitment to quality, customer satisfaction, and sustainable practices. We aspire to set the standard in the industry by leveraging cutting-edge technology and fostering a culture of excellence and integrity. Through our strategic partnerships and dedication to continuous improvement, we aim to empower our clients and contribute positively to the infrastructure and development of the region, becoming the trusted partner of choice for all plumbing, fire fighting, HVAC, and gas network needs.



# QUALITY POLICY

At Diamond Valves Trading Company, we are committed to delivering the highest standards of quality in all our products and services. Our quality policy is founded on the following principles:

## 01 CUSTOMER FOCUS

We prioritize the needs and expectations of our clients, striving to exceed them through superior product offerings and exceptional service.

## 02 CONTINUOUS IMPROVEMENT

We actively pursue opportunities to enhance our processes, products, and services through ongoing training, innovation, and feedback.

## 03 COMPLIANCE AND STANDARDS

We adhere to all relevant industry standards and regulations, ensuring that our products meet or exceed the required specifications for safety and performance.

## 04 SUPPLIER PARTNERSHIPS

We collaborate with reputable manufacturers and suppliers who share our commitment to quality, enabling us to offer reliable and durable products.

## 05 EMPLOYEE ENGAGEMENT

We foster a culture of quality among our team members by providing the necessary training resources, empowering them to take ownership of their roles in maintaining high standards.

## 06 SUSTAINABILITY

We are dedicated to sustainable practices that minimize our environmental impact while delivering quality solutions for our clients.

Through these principles, Diamond Valves Trading Company aims to build lasting relationships with our clients and partners, ensuring that quality remains at the forefront of everything we do.

# SERVICES

At Diamond Valves Trading Company, we offer a comprehensive range of services designed to meet the diverse needs of our clients in the plumbing, fire fighting, HVAC, and gas networks. Our services include expert proposals to help you select the right products for your specific project requirements, timely and efficient delivery to ensure your operations run smoothly, and after-sales support under warranties. With a focus on quality and customer satisfaction, our dedicated team is here to support you every step of the way, making us your trusted partner in achieving project success.

# BRANDS

Conex | Bänninger  
Valves

GALA

NKK

INTERPIPE

SURYA



Jazeera Steel  
حديد الجزيرة

BOTH - WELL  
HIGH PRESSURE FITTINGS

HITACHI

JIANZHI

NATIONAL

SHURJOINT®

L.B.C

BENKAN  
BENKAN Corporation

Kofco

SEVEN STAR

Denso®

Permatex

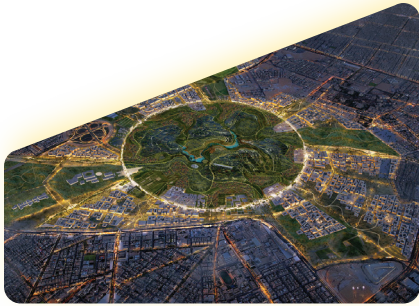
WIKAL®

ABRO®

DIAMOND VALVES



# PROJECTS



**KING SALMAN PART PROJECT**



**SINDALAH ISLAND PROJECT**



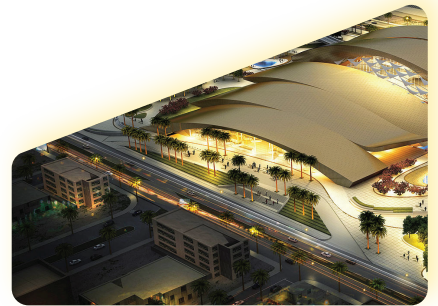
**NEOM CONSTRUCTION VILLAGE PROJECT**



**MISK RIYADH PROJECT**



**ROSHN VILLAS PROJECT**



**RIYADH METRO PROJECT**



**KAFD PROJECT**



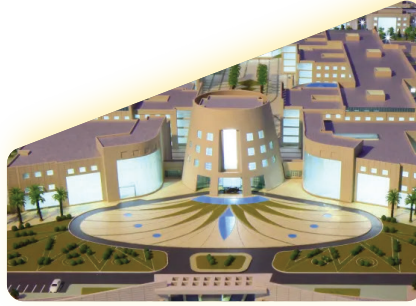
**PRINCES NOURAH UNIVERSITY PROJECT**



**SFMC RIYADH PROJECT**



**STC HEADQUARTER PROJECT**



**KAP 4 PROJECT**



**KAUST UNIVERSITY JEDDAH PROJECT**



**IKEA THUMAMA RIYADH PROJECT**



**ALNAKHEEL MALL RIYADH PROJECT**



**DALLAH NAMAR HOSPITAL PROJECT**



**AMAALA STAFF VILLAGE PROJECT**



**FAISALIA MALL PROJECT**



**SOLITAIRE MALL PROJECT**



**STC HEADQUARTER PROJECT**



**WAVE 2 SCHOOL PROJECT**

*and many more...*



# CLIENTS



نيوم NEOM

NEOM



AMAALA

AMAALA



KING SALMAN PARK



القديية  
Qiddiya

QIDDIYA



روشن  
ROSHN

ROSHN



البحر الأحمر الدولية  
Red Sea Global

RED SEA GLOBAL



قطار الرياض  
riyadh metro

RIYADH METRO



KAFCO  
مركز الملك عبدالعزيز المالي

KAFCO



STC



**DGDA**



مستشفيات دلة  
Dallah Hospitals

**DALLAH HOSPITAL**



**PEPSI**



الدواء  
al-dawaa  
care for life (العناية بالحياة)

**AL DAWAA**



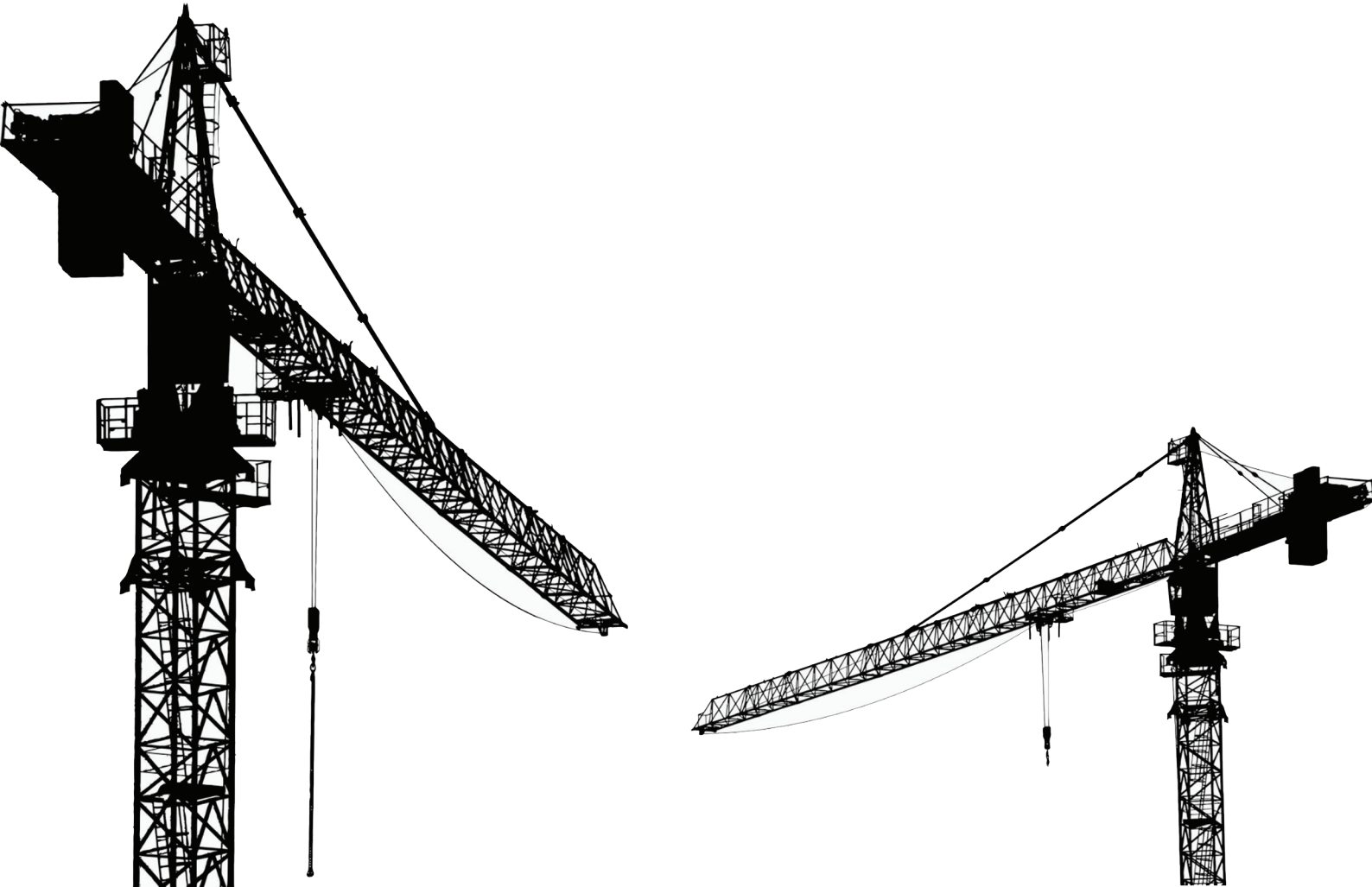
مسك  
مؤسسة محمد بن سلمان  
Mohammed Bin Salman  
Foundation

**MISK**



**IKEA**

*and many more...*



# PIPES



## NKK SEAMLESS PIPES

- Material: Carbon Steel – Black (Galvanized on demand)
- Wall Thickness: Sch 40 Sch 80 (above on demand)
- Size Range: ½" to 12" (above on demand)
- Standards: ASTM A53, API 5L Grade B, (others on demand)
- Application: Steam, Water, Gas, Oil & Air pipelines
- Origin: China

## INTERPIPE SEAMLESS PIPES

- Material: Carbon Steel – Black (Galvanized on demand)
- Wall Thickness: Sch 40 Sch 80 (above on demand)
- Size Range: ½" to 12" (above on demand)
- Standards: ASTM A53, API 5L Grade B, (others on demand)
- Application: Steam, Water, Gas, Oil & Air pipelines
- Origin: Ukraine



**INTERPIPE**



## SURYA ERW PIPES

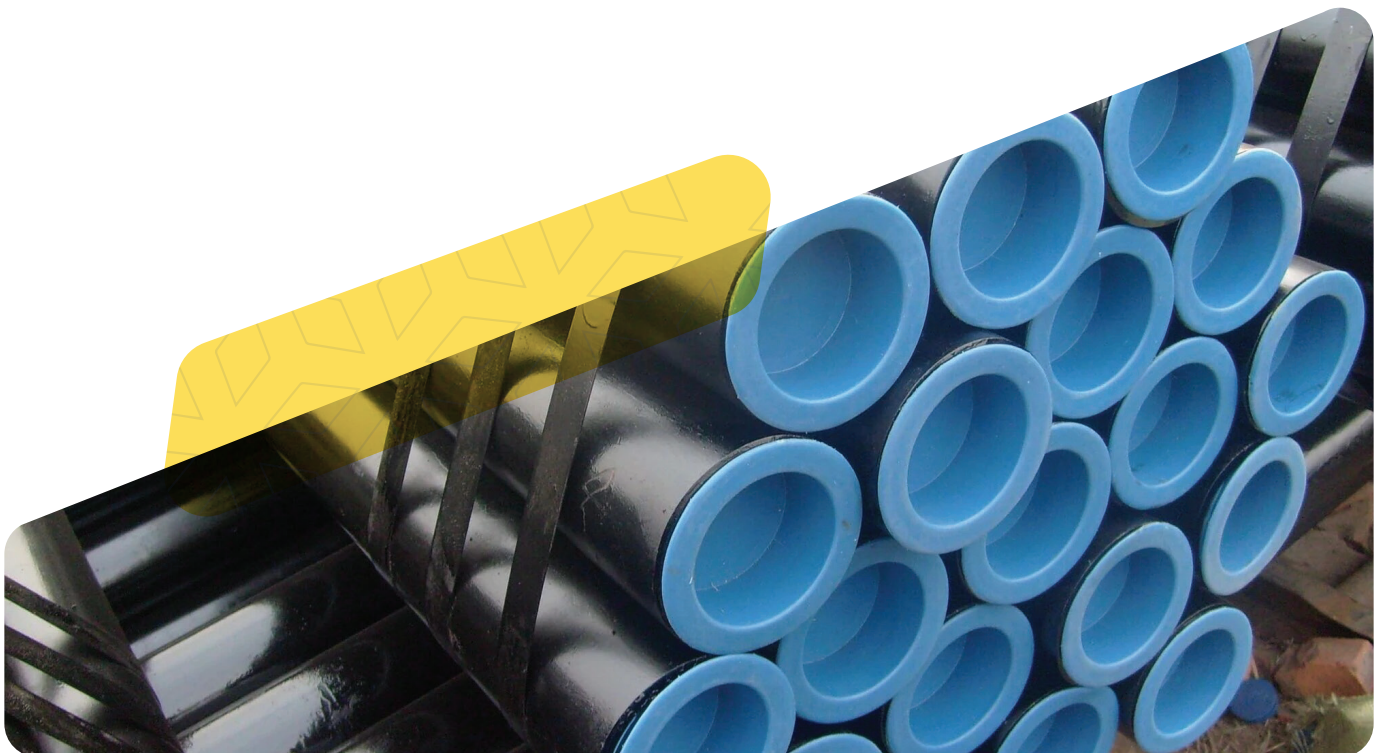
- Wall Thickness: Sch 30 Sch 40
- Size Range: ½" to 16" (above on demand)
- Standards: UL – ASTM A53 Grade B
- Application: Water Systems & Fire Systems
- Material: Black and Galvanized
- Origin: India

## AL JAZEERA ERW PIPES

- Wall Thickness: Sch 30 Sch 40
- Size Range: ½" to 8" (above on demand)
- Standards: UL – ASTM A53 Grade B
- Application: Water Systems



Jazeera Steel حديد الجزيرة



# FITTINGS

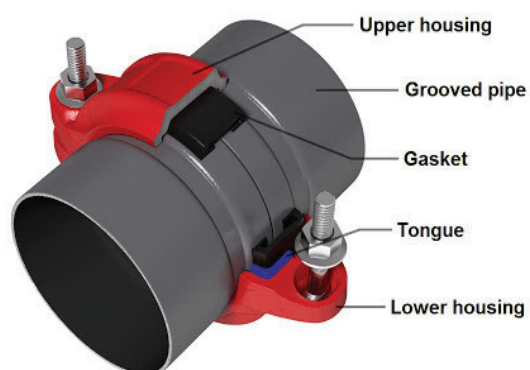


## BUTTWELD FITTINGS – BENKAN

- Material: Carbon Steel – Black
- Wall Thickness: Sch 40 Sch 80 (above on demand)
- Size Range: ½” to 24”
- Standards: ANSI , ASME B16.3, B16.14, B16.39
- Origin: China

## GROOVED FITTINGS: LBC , SHURJOINT & NATIONAL

- Material: Ductile Iron
- Pressure rating: Min 300 – Max 750 PSI
- Size Range: 1” to 24”
- Standards: UL – Listed FM – Approved ASTM – A536
- Origin: Taiwan, India, China





## MALLEABLE IRON FITTINGS: HITACHI & JIANZHI

- Material: Malleable Iron , Black and Galvanized
- Class: 150 (300 on demand)
- Size Range: ½" to 4"
- Thread: BSPT, NPT
- Standard: ANSI, ASME.B16.3, B16.14 B16.39 U/L Listed – FM approved
- Origin: Thailand & China

## FORGED FITTINGS – BOTHWELL

- Material: Forged Steel
- Class: 3000 (6000, 9000 on demand)
- Size Range: 1/8" to 4"
- Thread: NPT
- Standard: ASME B16.11-2011. MSS SP-79, 83 , 95, 97 & BS 3799
- Origin: Taiwan



# FLANGES & GASKETS



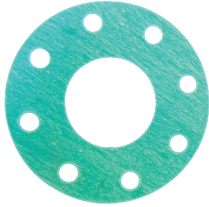
## FLANGES - KOFKO

- Material: Forged Carbon Steel - Stainless Steel
- Class: 150-300 - PN 16, PN 25
- Size range: 1/2" to 24" (above on demand)
- Types: Welding Neck, Threaded, Slip-on, Blind
- Standards: ANSI AWWA API & MSS
- Origin: China

## RUBBER GASKETS

- Class: 150, PN16
- Size range: 1/2" to 24" (above on demand)
- Thickness: 3mm
- Origin: KSA, India, China



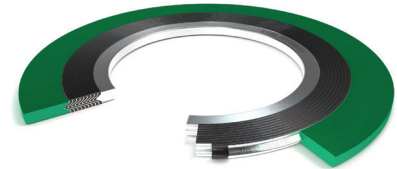


## FIBER GASKETS

- Type: Ring & Hole, ANSI 150, EN-16
- Size range: ½" to 24"
- Thickness: 3mm
- Origin: KSA, India, China

## SPIRAL WOUND

- Spiral Wound
- Material: Stainless Steel 304 -316
- Class: 150 - 300
- Size range: ½" to 24"
- Origin: KSA, India, China



## UNIVERSAL COUPLING FLANGE ADAPTOR - VICKING JOHNSONS

- Material: Ductile Iron
- Size range: 2" to 24" (above on demand)
- Standards: BS EN 1563 - BS EN 10025-2 Grade S275JR
- Origin: UK



Conex | Bänninger  
**Valves**

## HVAC & PLUMBING – VALVES



### VALVE – DUCTILE IRON

- Body: Ductile Iron
- Type: Gate, Globe, Check, Y- Strainer, Butterfly, Balancing, Air & Control Valves
- Pressure rating: PN16 (PN20 PN25 on Demand)
- Size Range: 2" - 24" (above on demand)
- Standard: BS 5163, BS 5155, BS 7350, EN 12266, GB/25178
- Complete range epoxy coated: internally & externally
- Origin: China

### VALVES – BRONZE

- Body: Bronze
- Type: Gate, Globe, Check, Y- Strainer, Balancing & Ball Valves
- Pressure rating: PN16, PN20, PN25, PN32, PN40
- Size Range: ½" - 4"
- Standard: EN 12288, EN 5154, BS 7350
- Origin: China





## PRESSURE INDEPENDENT CONTROL VALVE (PICV)

- Body: Brass , Ductile Iron
- Type: Hook-up Kits, Threaded and Flanged PICV
- Pressure Rating: PN 16
- Size Range: ½ " to 10" , Hook-up Kit ½", ¾", 1" & 1-¼ "
- Origin: Korea

## VALVES – BRASS

- Body: Brass
- Type: Gate, Globe, Check, Ball, Foot, Pressure reducing, Float Air Valves & Y- Strainer
- Pressure rating: PN10,PN16 ,PN20, PN25
- Size Range: ½" - 4"
- Standard: EN 12288, EN 13959 EN 10226-2
- Origin: China



## RUBBER EXPANSION JOINTS

- Body: EPDM – Rubber Reinforced with Nylon and Stainless-Steel wire
- Type: Union (Double Sphere) Flange (Single & Double Sphere)
- Pressure rating: PN16
- Size Range: Union ½" to 4" – Flange 2" to 24"
- Standard: GB/D17241.6-1998
- Origin: China

# GALA | Regulating Systems

## FIRE PROTECTION PRODUCTS



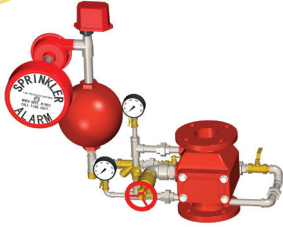
### VALVE - DUCTILE IRON

- Type: Flange & Groove
- Items: Gate, Check, Y-Strainer, Butterfly
- Pressure Rating: 300, 250, 200 psi
- Size Range: 2" to 24"
- Standard: AWWA C515, C508/BS5163
- Origin: USA

### VALVES - BRASS

- Type: Threaded
- Items: Test & Drain, Fire Department Connection, Landing, Ball valve
- Pressure rating: 300 psi
- Size Range: ½" - 4"
- Origin: USA



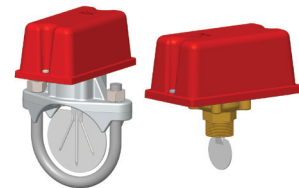


## WET ALARM CHECK VALVE ASSEMBLY

- Includes: Retard Chamber, Water Motor Alarm, Alarm Pressure Switch
- Body: Ductile Iron
- Pressure rating: 175 psi
- Size Range: 4" to 8"
- Origin: USA

## SWITCHES

- Items: Temper Switch, Water flow Detector
- Origin: USA



## FLEXIBLE CONNECTORS

- Body: EPDM – Rubber Reinforced with Nylon and Stainless-Steel wire
- Type: Union (Double Sphere) Flange (Single & Double Sphere)
- Pressure rating: PN16
- Size Range: Union ½" to 4" – Flange 2" to 24"
- Standard: American & British
- Origin: USA



# GALA | Regulating Systems

## FIRE PROTECTION PRODUCTS



### BURIED GATE VALVES

- Body: Ductile Iron
- Type: Non-Rising Stem
- Pressure Rating: 300, 250, 200 psi
- Standards: AWWA C515/BS 5163
- Size Range: 2" to 24"
- Origin: USA

### POST INDICATOR

- Origin: USA



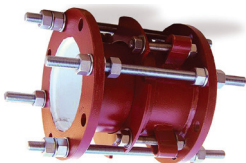


## HYDRANTS

- Body: Ductile Iron
- Type: Dry barrel & Wet barrel
- Pressure Rating: 250 psi
- Design Standard: FM1510/UL246/AWWA C502
- Size Range: 6"
- Origin: USA

## GATE VALVE ACCESSORIES

- Items: T-key, Spindles, Surface Box
- Origin: USA



## DISMANTELING JOINTS

- Body: Carbon Steel
- Pressure Rating: PN-16/PN-25, class 150/class 300
- Size: 2½" to 88"
- Origin: USA



**TEMBO  
SEVEN STAR®**

# PIPE HANGER & SUPPORTS

Pipe supports are designed to support insulated or non-insulated pipes allowing vertical adjustment and limited movement in the piping system. A wide range of pipe supports are available for various applications including, Clevis Hanger, Loop Hanger, J-Hanger, Bell Hanger, Wire Pipe Hanger, Milford Hanger, DWV Pipe Hanger...etc.

Pipe fasteners are designed for support and attachment of pipe to structural members. A wide range of pipe supports are available for various applications.

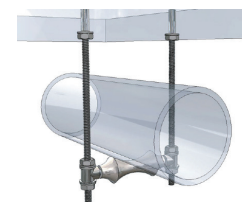


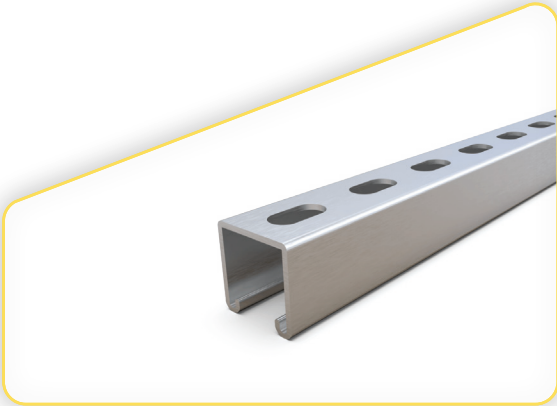
## HANGERS

- Material: Mild Steel , EPDM Rubber
- Type: Clevis, Sprinkler, Hanger with EPDM lining, U-Strap
- Riser Clamp, U Bolt, Rubber Support insert
- Size range: ½" to 30"
- Standard: ANSI / MSS SP-58 & SP-69
- Origin: India

## ROLLERS

- Material: Mild Steel
- Type: Roller Stand, Roller Chair, Roller Hanger, Pipe Roller
- Size range: 2" to 30"
- Standard: ANSI / MSS SP-58 & SP-69
- Origin: India



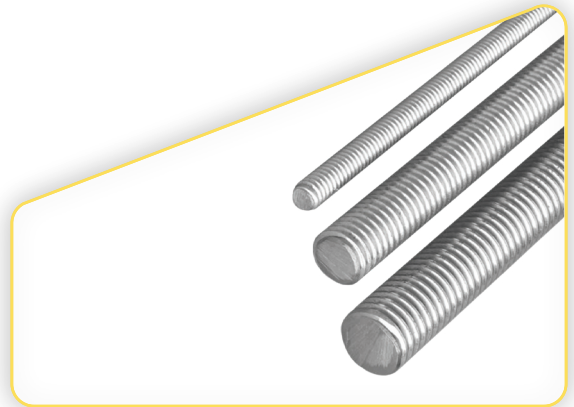


## CHANNELS & BARS

- Material: Mild Steel
- Type: Slotted Channels, Angle Bars
- Length: 3Mtrs, 6 Mtrs
- Origin: India

## THREADED ROD FASTENERS & ANCHORS

- Material: Mild Steel, Carbon Steel
- Type: Threaded Rod, Bolts, Nut, Washer, Anchors, G-Clip & beam Clamp
- Standard: ASTM , ASME, BS, DIN, BS EN ISO / JIS
- Origin: India



**TEMBO  
SEVEN STAR®**

# PIPE HANGER & SUPPORTS

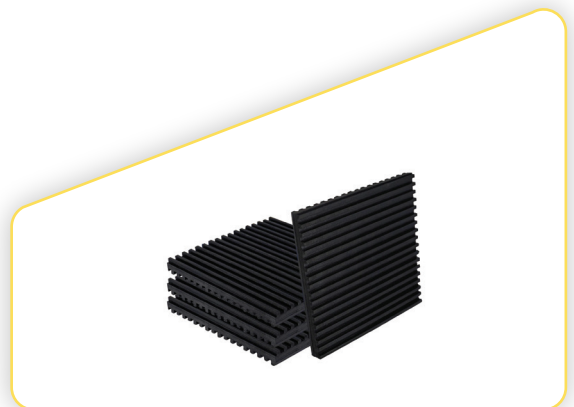


## ANTI VIBRATION – SPRING

- Spring Hanger
- Closed Spring Mount
- Open Spring Mount

## ANTI VIBRATION – PADS

- Ribbed Mounting Pad
- Waffle Pads
- Crock Sandwich Pads
- Metal Sandwich Pads





## DIELECTRIC FITTINGS

- Dielectric Union
- Dielectric Flange

## EXPANSION JOINT

- Threaded
- Flanged
  - i. Single Sphere
  - ii. Double Sphere



## ANTI VIBRATION-RUBBER

- Rubber Hanger
- Duct Mount
- Turret Mount

# HVAC INSTRUMENTS & MISCELLANEOUS



## GAUGES & ACCESSORIES: WIKKA & GALA

- Thermometer
- Pressure Gauge
- Siphon Tube
- Cock Valves





## DENSO – ANTI CORROSION

- Type: Tape, Primer, Densopol, Densyl Mastic
- Size range: 50, 80, 100, 150 mm
- Standard: ASTM D1000
- Origin: UK



## TEFLON TAPE



## PERMATEX



## JUTE



## CEMENT & CLEANER



**DIAMOND VALVES TRADING CO**  
**شركة الصمامات العاسية التجارية**

## Contact Us

**P:** 011 450 1849

**E:** [Info@diamondvalves.com](mailto:Info@diamondvalves.com)

**W:** [www.diamondvalves.com](http://www.diamondvalves.com)

**A:** OFFICE 106 , BUILDING 6260, ADDITIONAL NUMBER 3965,  
POSTAL CODE 12836, IBN ALQAIM ALJAWZIA STREET,ALMALAZ  
DIST. , RIYADH , SAUDI ARABIA